

# DOLHAIDD MANSION

Distinguished 17th Century Estate on the *River Teifi*

FINE & COUNTRY



## Executive Summary

---

Dolhaidd Mansion is an exceptional Grade II listed 17th-century country estate situated on the banks of the River Teifi in West Wales.

Set within approximately 25 acres of breathtaking countryside, the property offers a rare blend of historical grandeur, architectural elegance, and natural beauty.

Featuring a substantial eight-bedroom main residence, four charming holiday cottages, and a selection of historic outbuildings, Dolhaidd Mansion presents an unparalleled lifestyle opportunity as a prestigious family home, a heritage retreat, or a lucrative hospitality venture.

With its private river frontage, Victorian and Georgian architectural elements, and deep-rooted historical significance, this estate is a true gem in the Welsh property market.



## Property Overview

---

The estate comprises a grand 17th-century Main House, four self-contained Holiday Cottages, and a collection of historically significant Outbuildings — all set within approximately 25 acres of unspoiled West Wales countryside with private frontage on the River Teifi.

- Main House: 8 bedrooms, 5 reception rooms, 4 bathrooms; Victorian façade with Georgian interiors, rich in period detail and historical character
- Holiday Cottages: Four fully operational units (3 x 2-bedroom, 1 x 3-bedroom), converted from original estate buildings with tasteful, sympathetic restoration
- Outbuildings: Grade II listed Stable Block and Coach House; original 17th-century Ice House offering heritage interest and potential for further use
- River Access: Private stretch of the River Teifi, renowned for salmon and sea trout fishing; includes natural waterfall and scenic riverbank





## The Main Residence

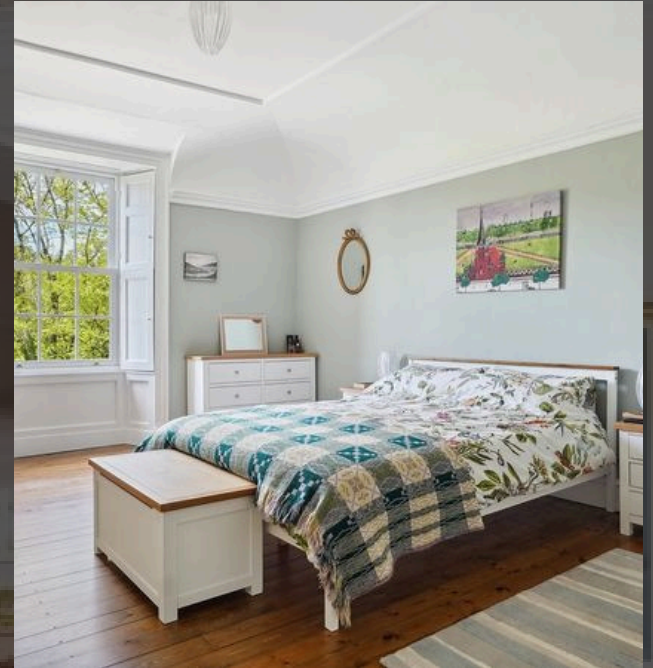
A distinguished 17th-century country house with a Victorian façade and Georgian interior, the main residence offers eight bedrooms, five reception rooms, and four bathrooms. Rich in period detail and architectural charm, it reflects centuries of heritage and craftsmanship in every room.









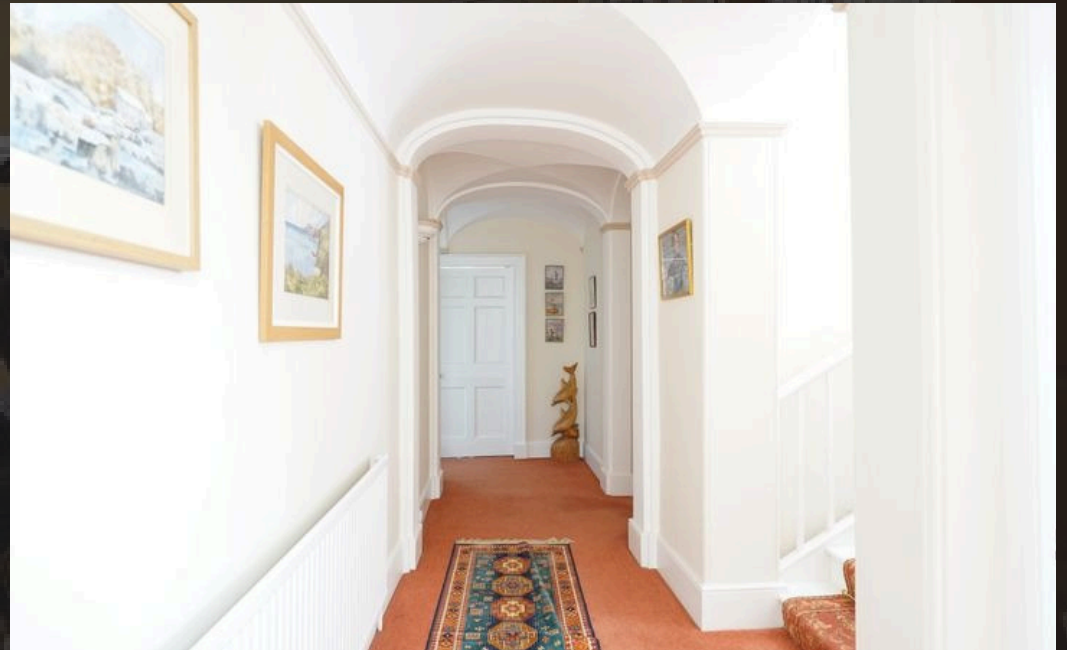


## Holiday Cottages

The estate includes four beautifully converted holiday cottages — three with two bedrooms and one with three bedrooms. Retaining the character of the original farm buildings, each cottage combines historic charm with modern comfort, providing a successful and established income stream.









## Outbuildings and Grounds

Set within approximately 25 acres of landscaped gardens, woodland, and pasture, the estate features a Grade II listed stable block, coach house, and a rare 17th-century ice house. With private frontage on the River Teifi, including a natural waterfall, the grounds offer both beauty and potential for further development or leisure use.







## Potential and Appeal

The estate's extensive grounds and buildings make it particularly appealing for a range of country and business pursuits. The combination of historical significance, architectural features, and natural beauty positions Dolhaidd Mansion as a unique offering in the UK property market.





# Dolhaidd Mansion (First Floor & Second Floor)

Approximate Gross Internal Area

House : 9116 sq ft - 847 sq m

Cottages & Outbuildings: 7222 sq ft - 671 sq m

Total : 16338 sq ft - 1518 sq m



SKETCH PLAN FOR ILLUSTRATIVE PURPOSES ONLY

All measurements walls, doors, windows, fittings and appliances, their sizes and locations, are approximate only. They cannot be regarded as being a representation by the seller, nor their agent.

Produced by Potterplans Ltd. 2025



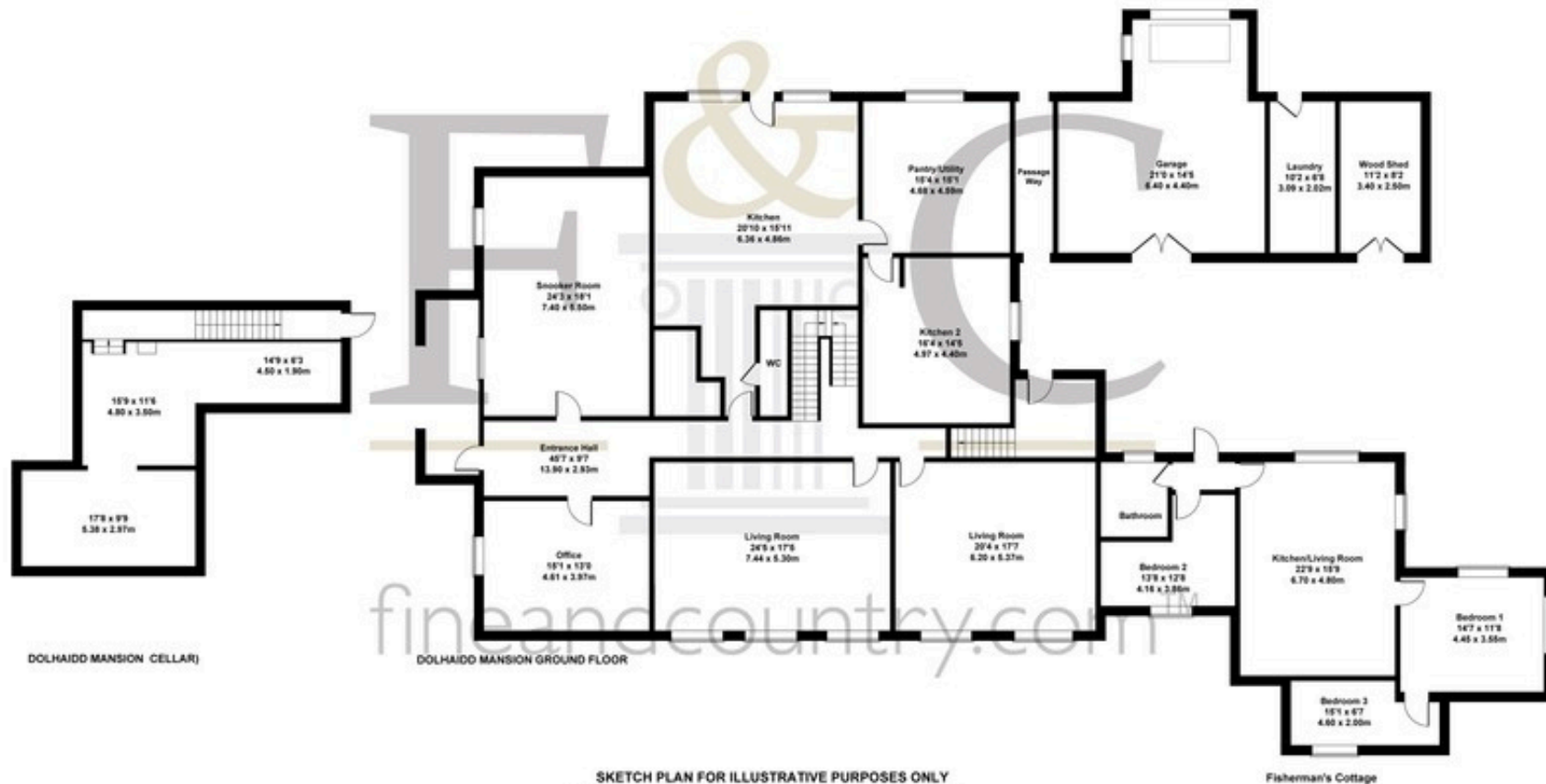
## Dolhaidd Mansion (Ground Floor & Cellar)

Approximate Gross Internal Area

House : 9116 sq ft - 847 sq m

Cottages & Outbuildings: 7222 sq ft - 671 sq m

Total : 16338 sq ft - 1518 sq m



SKETCH PLAN FOR ILLUSTRATIVE PURPOSES ONLY

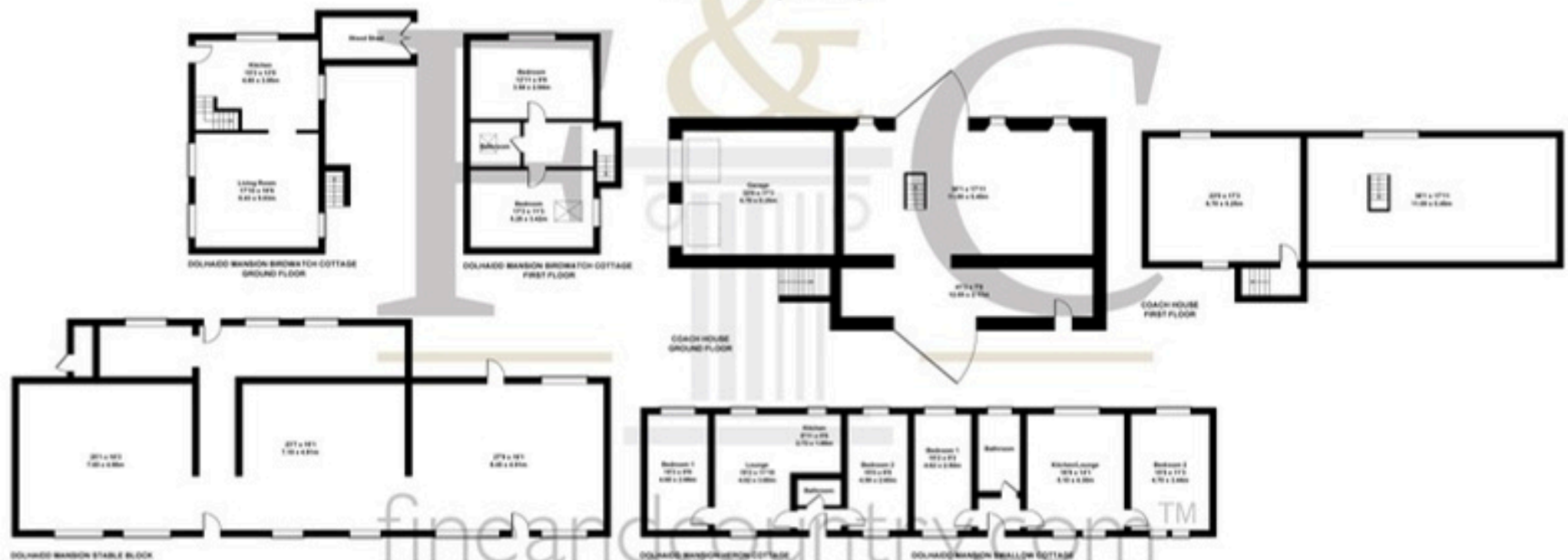
All measurements walls, doors, windows, fittings and appliances, their sizes and locations, are approximate only. They cannot be regarded as being a representation by the seller, nor their agent.

Produced by Potterplans Ltd. 2025



## Dolhaidd Mansion (Cottages and Outbuildings)

Approximate Gross Internal Area  
 House : 9116 sq ft - 847 sq m  
 Cottages & Outbuildings: 7222 sq ft - 671 sq m  
 Total : 16338 sq ft - 1518 sq m



SKETCH PLAN FOR ILLUSTRATIVE PURPOSES ONLY

All measurements walls, doors, windows, fittings and appliances, their sizes and locations, are approximate only. They cannot be regarded as being a representation by the seller, nor their agent.

Produced by Pottingers Ltd. 2025

*For further information or to book a viewing, please contact:*

**Fine and Country West Wales & Homes of Wales**

01974 299055

[westwales@fineandcountry.com](mailto:westwales@fineandcountry.com)